

D-Fuses - European Standard



Class: F and gG/gL

Voltage ratings: 400V_{AC} - 250V_{DC}

Current ratings: 0.5A to 200A

Standards: IEC 60269-3-1

DIN VDE 063 Part 301

DIN 49515 / 49360 /49365
and 49522

SIBA D-Fuse also known as Diazed and Neozed

Features and Benefits



Non-interchangeability of fuse links due to graduated contact diameter to current rating with matched gauge piece in fuse base.



All fuses have blown fuse indication



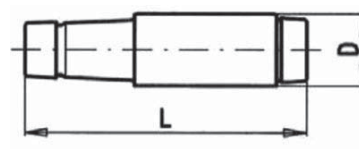
Fuse bases and accessories available

Article Number	Description	Selection Guide	Technical Data
500V_{AC} - IEC			
1000201	ND - E16	With blown fuse indicator	610
500V_{AC} - IEC			
1000204	ND - E16	With blown fuse indicator	611
1000504	DII - E27		
1000704	DIII - E33		
1000904	DIV - R1-1/4"		
1001004	DV - R2"		
500V_{AC} / 250V_{DC} - IEC			
1002704	D01 - E14	With blown fuse indicator	613
1002804	D02 - E18		
1002904	D03 - M30x2		

D	Rated Voltage [U _n] 500V _{AC}	Rated Breaking Test Capacity 50kA	Rated Voltage 500V _{AC}	Class F	Standard(s) DIN 41687 VDE 0635
----------	---	---	--	-------------------	---

ND - E16

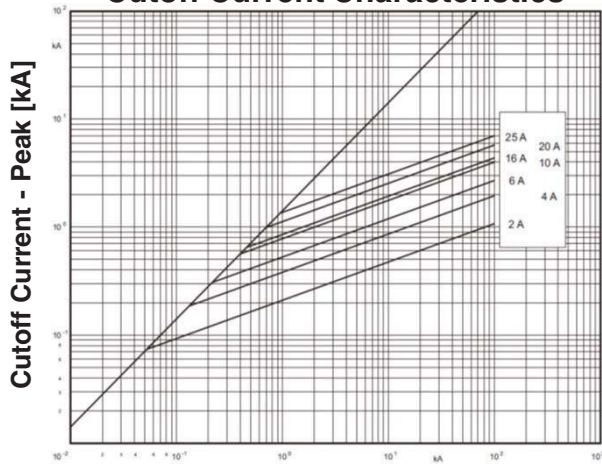
Rated Current I _n [A]	ND Article Number	Pre-arc I ² t [A ² s]	Total I ² t @ 250V _{AC} [A ² s]	Total I ² t @ 400V _{AC} [A ² s]	Total I ² t @ 500V _{AC} [A ² s]	Power Loss [W]
2	1000201.2	5	7.5	9.5	10	2.4
4	1000201.4	30	41	45	50	1.2
6	1000201.6	85	130	150	165	1.4
10	1000 01.10	280	440	480	510	2.1
16	1000201.16	400	870	1 050	1 300	2.5
20	1000201.20	930	1 740	2 050	2 300	2.6
25	1000201.25	1 650	2 850	3 400	3 800	3.4



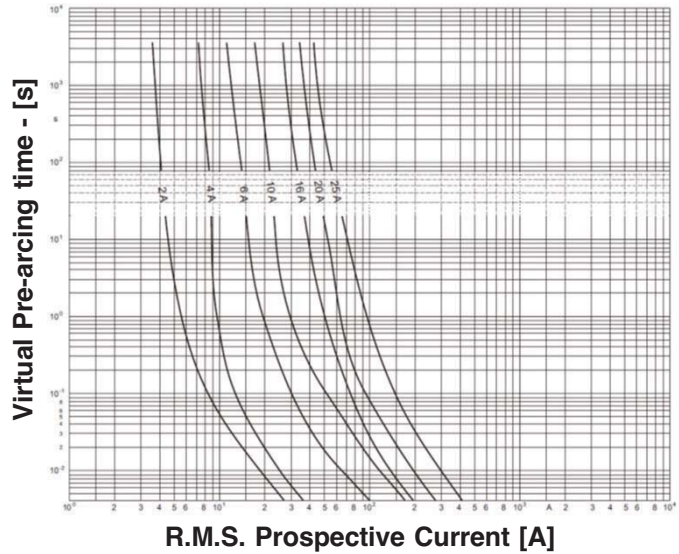
Weight [kg per 100]	1.4
Units per Package	50

Dimensions	
D	0.50" / 12.5mm
L	1.97" / 50mm

Cutoff Current Characteristics



Time-Current Characteristics



D	Rated Voltage	Rated Breaking Test	Class	Standard(s)
	[U _n] 500V _{AC}	Capacity 50kA Voltage 500V _{AC}	gG/gL	IEC 60 269-3 DIN VDE 0636-3

ND, DII, DIII, DIV & DV

Rated Current I _n [A]	ND Article Number	DII Article Number	Pre-arc I ² t [A ² s]	Total I ² t @ 250V _{AC} [A ² s]	Total I ² t @ 500V _{AC} [A ² s]	Power Loss [W]
2	1000204.2	1000504.2	5.4	11.5	18.5	0.9
4	1000204.4	1000504.4	16	33	53	1.2
6	1000204.6	1000504.6	26	55	90	1.7
10	1000204.10	1000504.10	58	120	200	2.1
16	1000204.16	1000504.16	400	840	1 350	2.5
20	1000204.20	1000504.20	810	1 700	2 800	2.6
25	1000204.25	1000504.25	1 280	2 700	4 400	4.1
Weight [kg per 100]						
1.4		3.1				
Units per Package						
50		25				

Rated Current I _n [A]	DIII Article Number	DIV H Article Number	DV H Article Number	Pre-arc I ² t [A ² s]	Total I ² t @ 250V _{AC} [A ² s]	Total I ² t @ 500V _{AC} [A ² s]	Power Loss [W]
35	1000704.35			3 100	6 500	10 600	4.6
50	1000704.50			4 700	9 900	16 000	6.1
63	1000704.63			5 000	16 900	27 300	6.5
80		1000904.80		6 400	13 400	21 600	7.3
100		1000904.100		32 500	68 300	110 500	9.7
125			1001004.125	51 900	108 900	176 300	9
160			1001004.160	81 000	170 100	275 400	10
200			1001004.200	190 500	400 000	647 500	11
Weight (kg per 100)							
5.3		11.4		23.1			
Units per Package							
25		10		10			

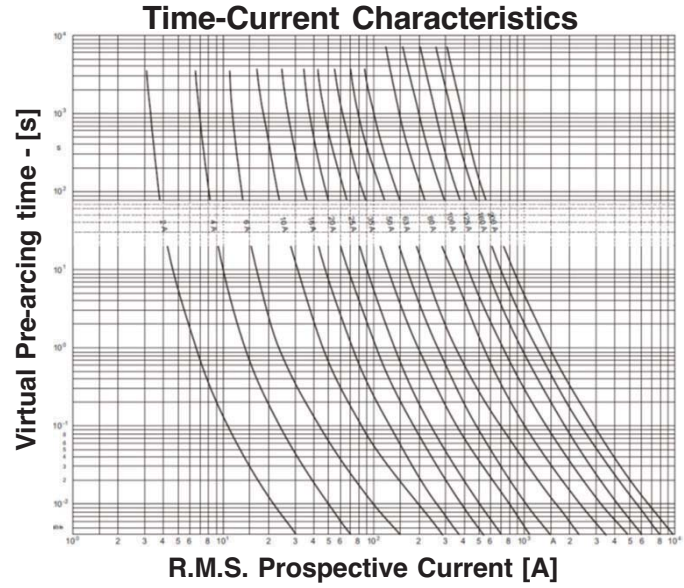
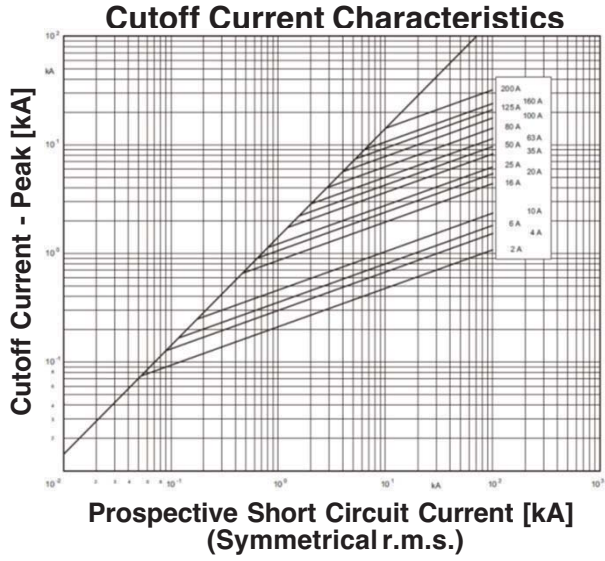
Dimensions [in / mm]					
	ND 1000204	DII 1000504	DIII 1000704	DIV H 1000904	DV H 1001004
D	0.50 / 12.5	0.87 / 22	1.06 / 27	1.30 / 33	1.80 / 46
L	1.97 / 50	1.97 / 50	1.97 / 50	2.24 / 50	2.24 / 50



FUSES

D	Rated Voltage	Rated Breaking Test	Class	Standard(s)
	[U _n]	Capacity	gG/gL	IEC 60 269-3
	500V _{AC}	50kA	500V _{AC}	DIN VDE 0636-3

ND, DII, DIII, DIV & DV



D	Rated Voltage	Rated Breaking Test	Class	Standard(s)
	[U _n]	Capacity	gG/gL	IEC 60 269-3
	400V _{AC} 250V _{DC}	50kA 8kA	400V _{AC} 250V _{DC}	DIN VDE 0636-3

D01, D02 & D03

Rated Current I _n [A]	D01 Article Number	D02 Article Number	D03 Article Number	Pre-arc I ² t [A ² s]	Total I ² t @ 250V _{AC} [A ² s]	Total I ² t @ 400V _{AC} [A ² s]	Power Loss [W]
1	1002704.1			0.6	1.5	2.4	2.2
2	1002704.2			3.2	6.6	8.6	1.0
4	1002704.4			13	21	25	1.8
6	1002704.6			45	67	160	1.8
10	1002704.10			200	300	350	1.5
16	1002704.16			440	630	1 100	2.0
20		1002804.20		750	1 420	1 800	1.4
25		1002804.25		1 050	2 000	2 600	1.8
35		1002804.35		2 800	4 800	6 500	2.5
50		1002804.50		5 800	12 000	14 000	2.7
63		1002804.63		7 500	16 000	22 000	3.6
80			1002904.80	13 500	25 000	35 000	1.0
100			1002904.100	22 000	45 000	51 000	0.7
Weight [kg per 100]							
	0.62	1.4	4.2				
Units per Package							
	50	50	10				

Dimensions [in / mm]			
	D01 1002704	D02 1002804	D03 1002904
D	0.43" / 11	0.60" / 15.3	0.90" / 22.5
L	1.42" / 36	1.42" / 36	1.70" / 43

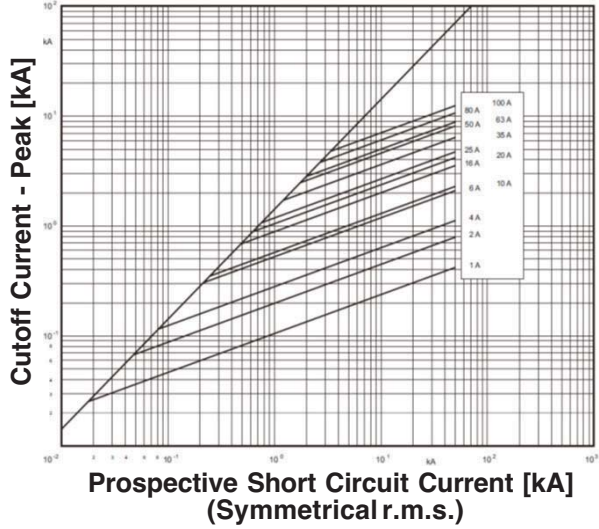


FUSES

D	Rated Voltage [U _n]	Rated Breaking Test Capacity	Rated Breaking Test Voltage	Class gG/gL	Standard(s)
	400V _{AC}	50kA	400V _{AC}		IEC 60 269-3
	250V _{DC}	8kA	250V _{DC}		DIN VDE 0636-3

D01, D02 & D03

Cutoff Current Characteristics



Time-Current Characteristics

